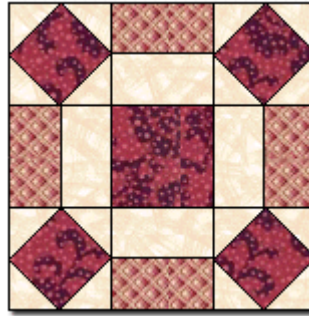


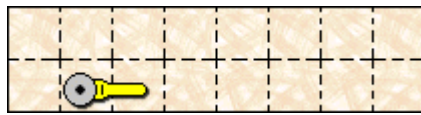
# Broken Wheel

This makes a 12" block!

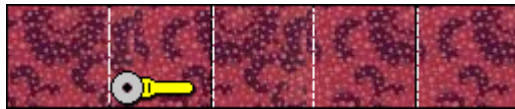


Please abide by the [Terms and Conditions of use!](#) :o)

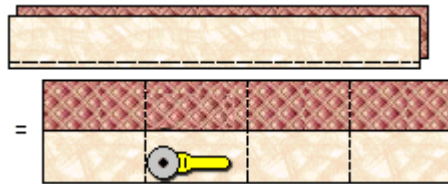
## \*\* Preparing the Pieces and Sewing the Block \*\*



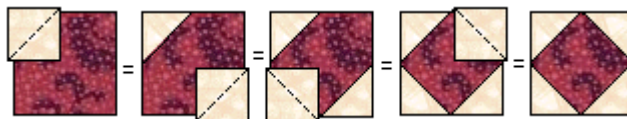
First cut the Color 3 5" x 20" strip into sixteen 2-1/2" squares using a rotary cutter...



Next cut the Color 2 4-1/2" x 22-1/2" strip into five 4-1/2" squares...



Then stack the Color 3 and Color 1 2-1/2" x 18" strips, right sides together, and sew using a scant 1/4" seam, pressing seam allowance towards darker fabric. Mark off at 4-1/2" intervals, and cut into four segments...



Place a Color 3 small square right sides together, lined up with the upper right corner of a Color 2 large square. Mark the diagonal on the back of the small square, and sew ON this line. Trim off excess seam allowance; press remainder to the outside. Repeat with another small square on the opposite corner, then on the remaining two corners. Make four of these units.

...on to [Page 2!](#)

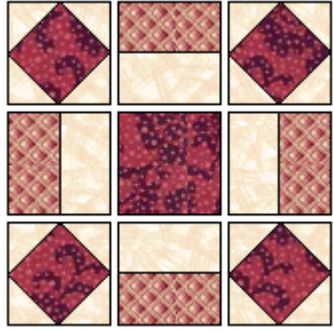
© Nov1999 Marcia Hohn

Traditional Block

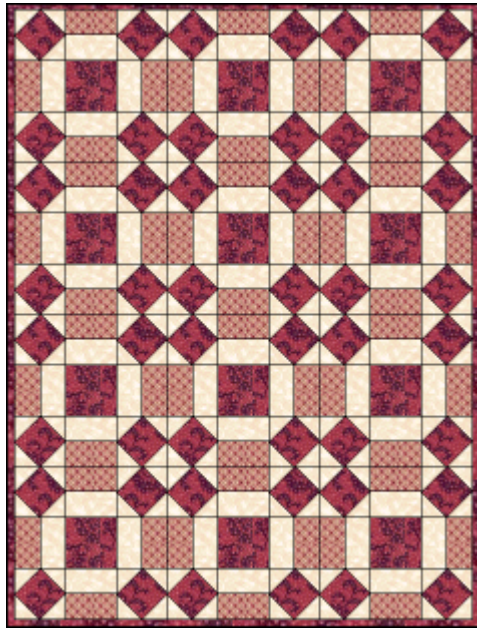


pattern from  
<http://www.quilterscache.com>

# Broken Wheel - Page 2



Piece the block by making rows, and then sewing rows together, alternating pressing directions by row, referring to the diagram for placement and direction of units...



Here's what the quilt would look like! :o) Pretty and Easy...what better combination?? :o)

Happy Quilting!!

Marcia :o)

Here's one that Karin made! Karlene's! Ken's!  
Chaundra's! Jeanne's!

## \*\* Supplies List \*\*



Color 1 Color 1 needs: one strip 2-1/2" x 18"



Color 2 Color 2 needs: one strip 4-1/2" x 22-1/2"



Color 3 Color 3 needs: one strip 5" x 20" AND one strip 2-1/2" x 18"

To the Patterns or The Quilter's Cache

© Nov1999 Marcia Hohn



Page 1

Traditional Block

<http://www.quilterscache.com>